



Table of Contents

Overview	2
Objectives.....	2
Enterprise Roles	2
Procedure.....	3
A. Navigation	3
B. Prompts	4
C. Refreshing the report	6
D. Export Report	6
Overview of the Report.....	7
A. Structure of Analysis Workspace	7
B. Layout of the Report	9
Scope determination	35
Additional Resources	35

Overview

This job aid documents how to execute the Business Intelligence (BI) report called “**End to End - Freight Orders Items and Charges**”. It is intended to facilitate the exploration of all information related to **Freight Orders** documents and the relevant information in the entire shipment process.

The aim of the report is to support business with the assessment of Shipments and Freight Orders from a wide variety of perspectives and indicators.

Business users can run Analysis Workspace reports and use them as a starting point to create complex, ad-hoc queries instantaneously by using features like “slice and dice”, “drill-down”, breakdown and “filtering”. In other words, the Analysis Workspace is a blank slate which provides users with what they need to build customised analysis and reports.

The user can run those reports, export and save them in Excel, PDF or CSV and even print them. When the user runs the report, the system generates the report from the latest available data set loaded in to SAP HANA from the Umoja transactional system. Data is refreshed in real time mode from the Transportation Management transactional system.

Objectives

This Job Aid will provide the step-by-step procedure on how to generate a report on **End to End - Freight Orders Items and Charges** using the Umoja BI Analysis Workspace application.

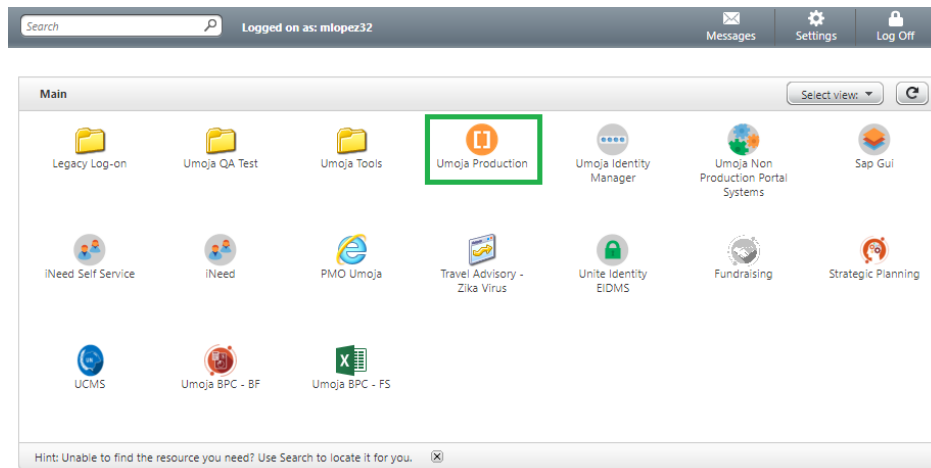
Enterprise Roles

BI.85 ROLE: ALL:BI:SC_TMEM_ANALYTIC_USER provides access to the TM Analysis Workspaces reports.

Procedure

A. Navigation

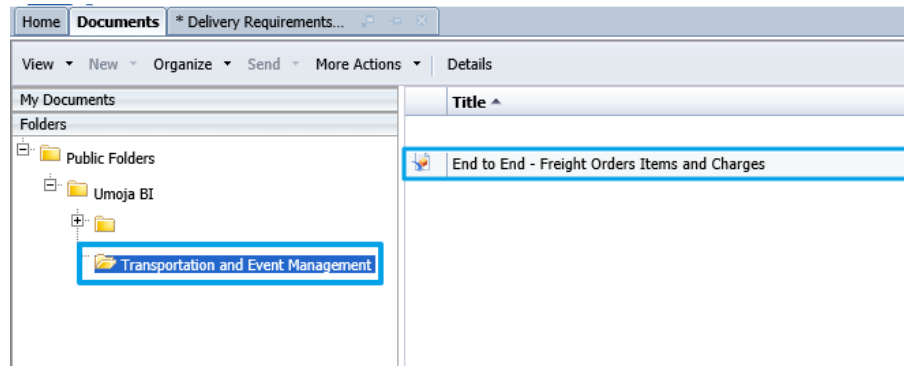
1. Log on to Citrix: <https://login.umoja.un.org>
2. Go to the icon called "Umoja Production".



3. Open the downloaded file (normally called "launch.ica").
4. Click on "BI Portal".

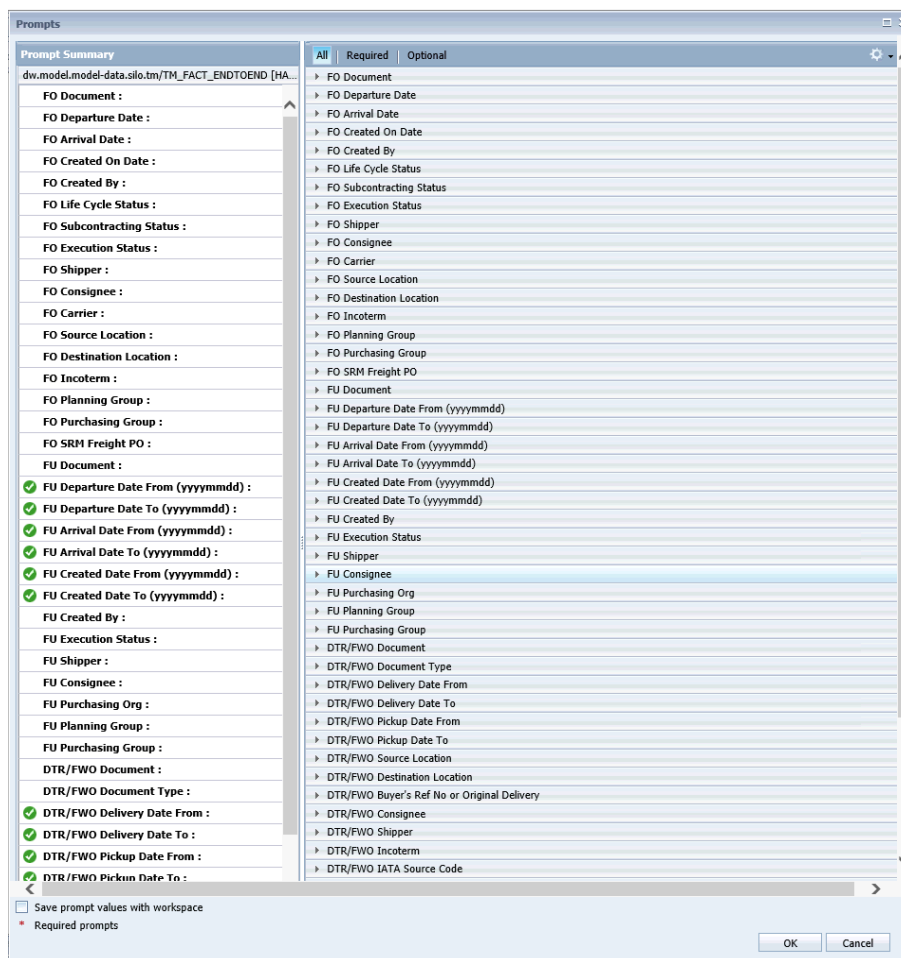


5. Open the public folder **Umoja BI → Transportation and Event Management**. Double-click on the name to open it.



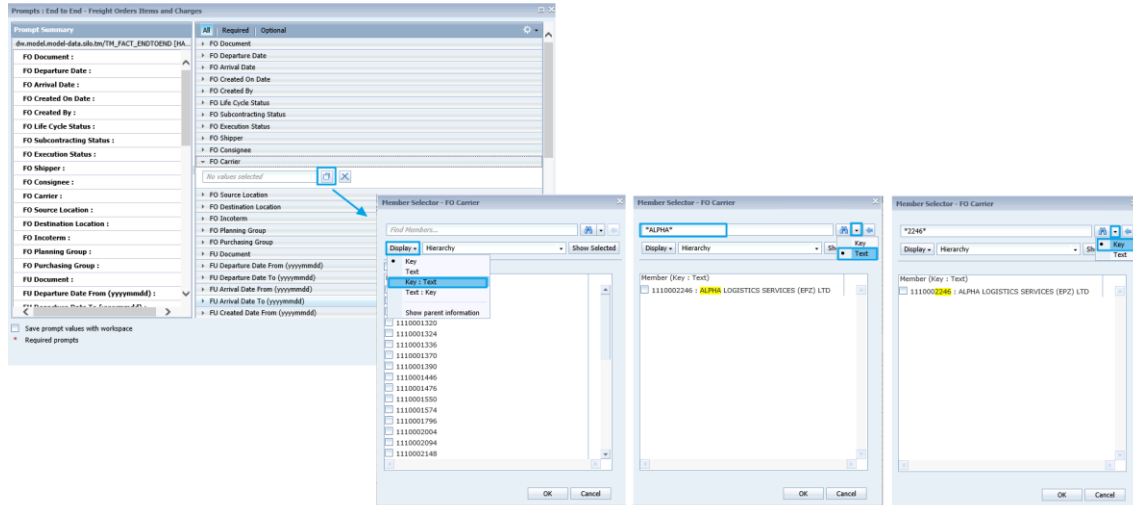
B. Prompts

1. As soon as you open the report, the Prompts window will display. All prompts are optional entries



It is recommended to use as many prompts as possible in order to have better response times while running and working with the report.

Tip: You may click on the button to choose the values you are interested in any of the prompts. The wildcard * may be useful to search broadly by Keys (e.g. *2246) or by Descriptions (e.g. *ALPHA*):

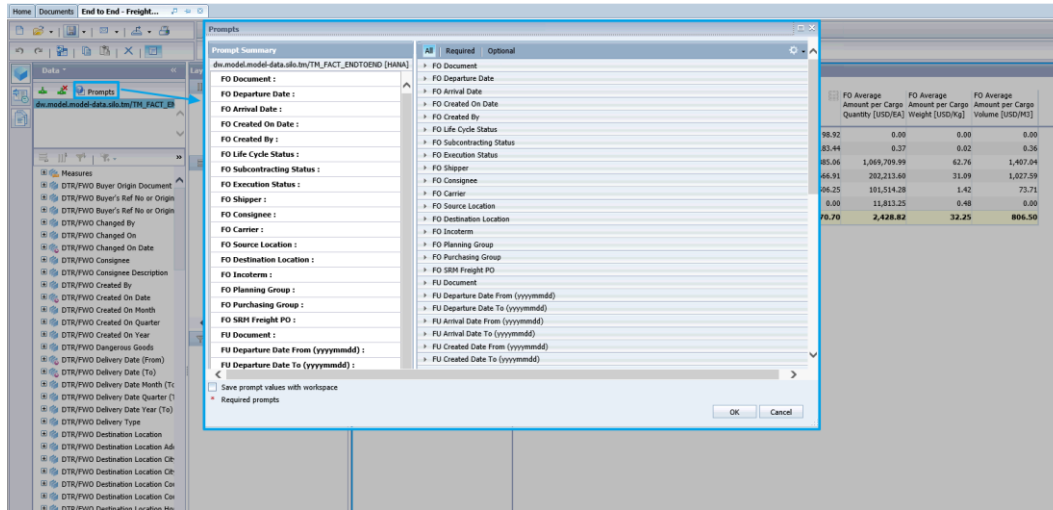


2. After entering the required filters, click **OK** and the report will run:

DTR/FWO Document Type Description	DTR/FWO Number of Documents	FO Item Fiscal Amount [USD]	FO Average Total Cargo Quantity [EA]	FO Average Total Cargo Weight [Kg]	FO Average Total Cargo Volume [M3]	FO Average Amount per Cargo Quantity [USD/EA]	FO Average Amount per Cargo Weight [USD/Kg]	FO Average Amount per Cargo Volume [USD/M3]
DTR for STO	77	0.00	1.80	4.02	96.82	0.00	0.00	0.00
DTR for URCE	315	431,217.00	2,087.59	26,538.81	2,183.44	0.37	0.82	0.36
Forwarding Order for COE	251	2,248,985,874.92	5.11	87,896.77	3,885.86	1,669,799.99	62.76	1,467.04
Forwarding Order for COE Troops	248	887,617,994.38	13.55	86,140.54	2,846.91	202,213.60	31.89	1,807.59
Forwarding Order for Troops Land and Sea	64	7,106,000.00	1.69	78,199.38	1,504.25	101,514.28	1.42	71.71
Forwarding Order for Wide Body (LTC)	411	6,723,833.86	1.29	31,524.49	0.80	11,813.25	0.48	0.00
Total Result:	1,346	2,950,865,019.34	654.38	49,272.13	1,970.70	2,428.82	32.25	866.50

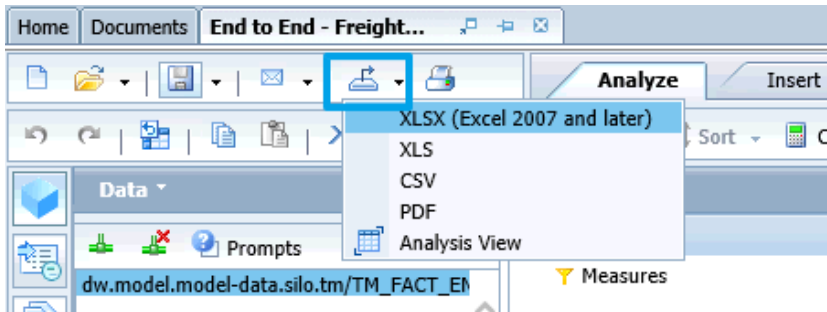
C. Refreshing the report

Once the report has been opened, you can decide to change the already selected filter values using the “Prompts” button:

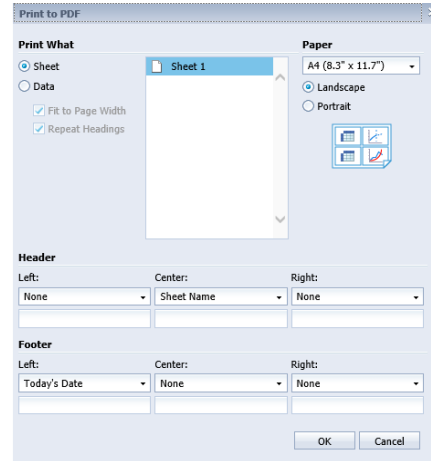
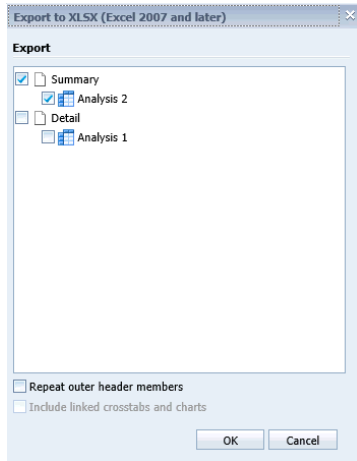


D. Export Report

1. You can export the report to Excel, PDF or CSV (text format) by clicking on the Export icon as seen below:



2. When the Export dialog box opens, make sure you select the required data to export using the available options, depending on the chosen export format. Furthermore, by clicking on “Repeat outer header members”, each row of data will contain the header information for that data element. This is useful for exporting flat tables for further analysis in Excel.

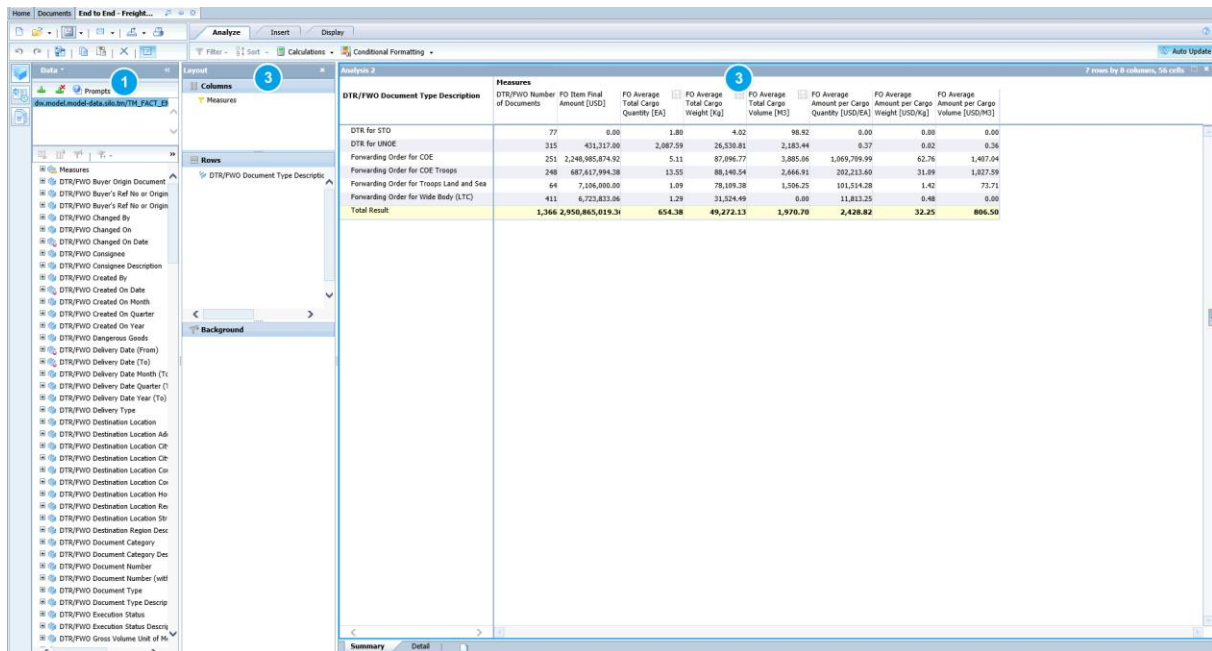


3. A pop-up dialog will appear, where the option to open or save the file needs to be chosen.

Overview of the Report

A. Structure of Analysis Workspace

The screenshot below highlights the main different navigational elements of an Analysis Workspace:



1. Data Panel

The data panel displays the *Measures* and *Characteristics* available to use in the report. The data panel is used to select the required information to perform navigation functions, such as adding characteristics to rows or columns or including new background filters.

Measures and Characteristics are the main components of an Analysis Workspace:

- **Measure** 📊: Numerical values or metrics which are measured in the analysis (e.g. *FO Quantity*).
- **Characteristic** 🏗️: Fields in Umoja that are used to differentiate and analyse measures under different perspectives (e.g. *FO Product*).

2. Layout Panel

The *Layout panel* is the panel adjacent to the *Data panel* and here you can:

- Drag and drop different characteristics and measures into the Rows or Columns of your analysis, as with Pivot tables in Excel.
- Drag and drop one or more measures or characteristics as Background Filters to your analysis.
- Perform navigational operations on characteristics and measures including filtering, re-ordering and swapping objects.

3. Analysis Panel

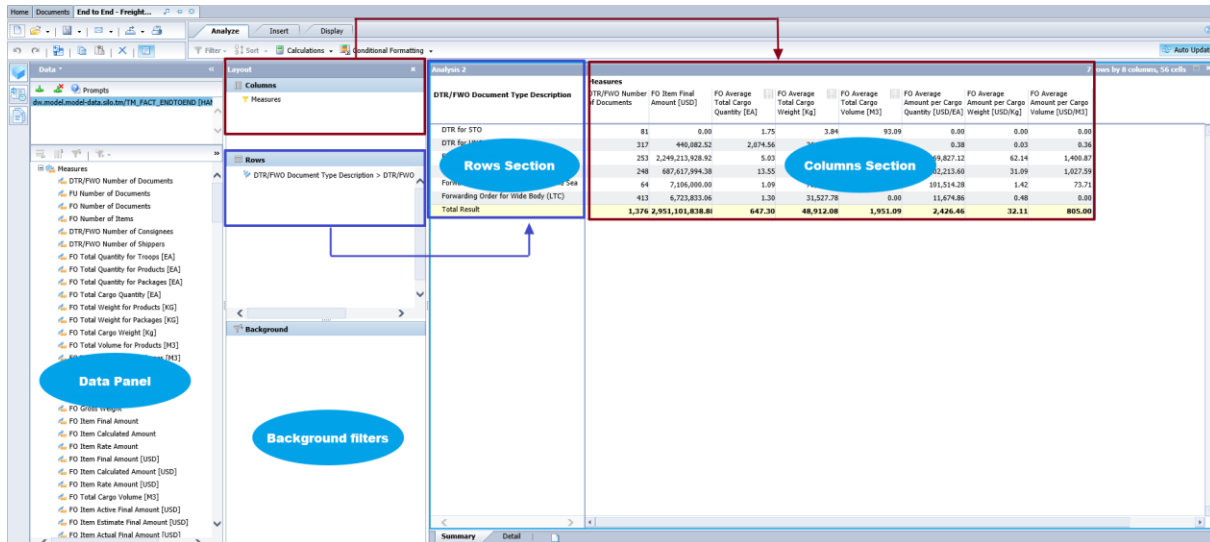
The Analysis window is the primary part of the screen displaying the rows and columns in a spreadsheet form for the selected data. It is located on the right of the *Layout panel*. This window displays the core components of the Analysis Workspace report.

Normally, the measures for a specific Analysis Workspace are set in the *Columns Section* of the analysis, while characteristics are placed in the *Rows section*.

The Analysis Panel can contain more than one Tab with different analysis or charts.

B. Layout of the Report

Analysis Workspaces have the following structure:



DTR/FWO Document Type Description	DTR/FWO Number of Documents	FO Item Final Amount [USD]	FO Average Total Cargo Quantity [EA]	FO Average Total Cargo Weight [Kg]	FO Average Total Cargo Volume [M3]	FO Average Amount per Cargo Quantity [USD/EA]	FO Average Amount per Cargo Weight [USD/Kg]	FO Average Amount per Cargo Volume [USD/M3]
DTR for STO	81	0.00	1.75	3.84	93.09	0.00	0.00	0.00
DTR for LTC	317	440,882.52	2,674.56	5.03	62.14	1,400.87	0.38	0.03
DTR for LTC (LTC)	253	2,249,213,828.92	13.55	19,827.12	31.09	1,627.99	1,213.60	62.14
Forwarding Order for viald Body (LTC)	240	687,617,994.38	1.99	181,514.38	1.42	73.71	181,514.38	1.42
Forwarding Order for viald Body (LTC)	44	7,196,980.00	3.20	31,527.78	0.00	11,674.86	6.48	0.00
Forwarding Order for viald Body (LTC)	413	6,323,833.26	1.99	31,527.78	0.00	11,674.86	6.48	0.00
Total Result	1,376	2,951,101,838.81	647.30	48,912.08	1,951.09	2,426.46	32.11	805.00

- **Data Panel**

It contains all the Characteristics and Measures that users may add to their ad-hoc analyses.

- **Measures:**

- **DTR/FWO Number of Documents:** Counter of Delivery-based Transportation Requirement (DTR) and Forwarding Orders (FWO) documents.
- **FU Number of Documents:** Counter of Freight Unit documents.
- **FO Number of Documents:** Counter of Freight Order documents.
- **FO Number of Items:** Counter of Freight Order items.
- **DTR/FWO Number of Consignees:** Total count of consignees utilized in the DTR or FWO documents.
- **DTR/FWO Number of Shippers:** Total count of shippers utilized in the DTR or FWO documents.
- **FO Total Quantity for Troops [EA]:** Total quantity of product TROOPS in the Freight Order documents.
- **FO Total Quantity for Products [EA]:** Total quantity in items of type PRD in the Freight Orders expressed in unit EA.
- **FO Total Quantity for Packages [EA]:** Total quantity in items of type PACK in the Freight Orders expressed in unit EA.



- **FO Total Cargo Quantity [EA]:** Total quantity to be delivered of cargo items in the Freight Orders expressed in unit EA.
- **FO Total Weight for Products [KG]:** Total weight of the items of type PRD in the Freight Orders expressed in unit KG.
- **FO Total Weight for Packages [KG]:** Total weight of the items of type PACK in the Freight Orders expressed in unit KG.
- **FO Total Cargo Weight [Kg]:** Total weight of cargo items in the Freight Orders expressed in unit KG.
- **FO Total Volume for Products [M3]:** Total volume of the items of type PRD in the Freight Orders expressed in unit M3.
- **FO Total Volume for Packages [M3]:** Total volume of the items of type PACK in the Freight Orders expressed in unit M3.
- **DTR/FWO Number of Carriers:** Counter of carriers employed in the DTR or FWO documents.
- **FO Quantity:** Total quantity to be delivered in the Freight Orders of all item types expressed in the unit of entry.
- **FO Gross Volume:** Total volume of all items in the Freight Orders expressed in the unit of entry.
- **FO Gross Weight:** Total weight of all items in the Freight Orders expressed in the unit of entry.
- **FO Total Cargo Volume [M3]:** Total volume of cargo items in the Freight Orders expressed in unit M3.
- **FO Quantity [EA]:** Total quantity to be delivered in the Freight Orders of all item types expressed in the EA.
- **FO Gross Volume [M3]:** Total gross volume of all items in the Freight Orders expressed in M3.
- **FO Gross Weight [KG]:** Total gross weight of all items in the Freight Orders expressed in KG.

The measures displaying charges values in the Analysis Workspace can be found in the colour highlighted areas of the TM screen, captured in the picture below:

The screenshot displays the 'Charges' table in SAP Transportation Management. The table includes columns for 'Rate', 'Calculated', and 'Final Amount'. Below the table, the 'Analysis Workspace' is shown with a grid of measures. Colored boxes highlight specific measures in the Analysis Workspace, and arrows point from these boxes to the corresponding values in the Charges table. For example, the 'FO Item Final Amount' measure is linked to the 'Final Amount' column, and the 'FO Item Actual Final Amount' measure is linked to the 'Final Amount' column for 'ACTUAL CHARGE'.

- **FO Item Final Amount:** *Final Amount* of the charge in Document Currency
- **FO Item Final Amount [USD]:** *Final Amount* of the charge in USD
- **FO Item Calculated Amount:** *Calculated Amount* of the charge in Document Currency
- **FO Item Calculated Amount [USD]:** *Calculated Amount* of the charge in USD
- **FO Item Rate Amount:** *Rate Amount* of the charge expressed in document currency (field **FO Item Rate Amount Currency**, present in the AW as characteristic)
- **FO Item Rate Amount [USD]:** *Rate Amount* of the charge in USD
- **FO Item Active Final Amount [USD]:** Final total value of the Freight Order in USD. If an Estimate charge is converted to Actual, the Estimate value is deactivated, hence this measure is equal to the Actual value, otherwise it will be equal to the Estimate one.
- **FO Item Estimate Final Amount [USD]:** This displays the Estimate Charges in USD, regardless if the same item has an Actual charge or these are also inactive charges.
- **FO Item Actual Final Amount [USD]:** This displays the Actual Charge in USD

- **FO Average Amount per Cargo Quantity [USD/EA]:** FO Item Active Final Amount [USD] divided by FO Total Cargo Quantity [EA]
- **FO Average Amount per Troops Quantity [USD/EA]:** FO Item Active Final Amount [USD] divided by FO Total Quantity for Troops [EA]
- **FO Average Amount per Cargo Weight [USD/Kg]:** FO Item Active Final Amount [USD] divided by FO Total Cargo Weight [Kg]
- **FO Average Amount per Cargo Volume [USD/M3]:** FO Item Active Final Amount [USD] divided by FO Total Cargo Volume [M3]
- **FO SRM Freight PO Amount [USD]:** Freight Order SRM Purchase Order Amount in USD
- **DTR/FWO Purchase Order Lead Time:** Days between approval date of purchasing order and arrival to destination event.

- **Characteristics:**

- **DTR/FWO Buyer's Ref No or Original Delivery:** Original Inbound or Outbound Delivery number for DTR or MOU description for FWO.
- **DTR/FWO Buyer's Ref No or Original Delivery (with leading zeroes):** Original Inbound or Outbound Delivery number for DTR or MOU description for FWO with leading zeroes in the delivery numbers.
- **DTR/FWO Changed By:** User who last changed the document
- **DTR/FWO Changed On:** Timestamp of last change to document expressed as YYYYMMDDHHMMSS
- **DTR/FWO Changed On Date:** Date of last change to document
- **DTR/FWO Consignee:** It is the consignee of the Delivery Based Transportation Requirement of Forwarding Order document. It indicates the recipient of the shipment and should have an equivalence with the Plant in ECC. For example:

Consignee	Description
KE00	UN Office at Nairobi UNON
LB10	UN Interim Force in Lebanon UNIFIL
...	...

- **DTR/FWO Consignee Description**
- **DTR/FWO Created By:** User who created the document
- **DTR/FWO Created On Date:** Date when the document was created
- **DTR/FWO Created On Month:** The month when the document was created
- **DTR/FWO Created On Quarter:** The quarter when the document was created
- **DTR/FWO Created On Year:** The year when the document was created

- **DTR/FWO Dangerous Goods:** It is the Dangerous Goods flag indicator in the Freight Unit
- **DTR/FWO Delivery Date (From):** The delivery date (From) at destination expressed in UTC time zone
- **DTR/FWO Delivery Date (To):** The delivery date (To) at destination expressed in UTC time zone
- **DTR/FWO Delivery Date Month (To):** The month of the delivery. It is derived from the Delivery date (To) or Delivery Date (From) if empty.
- **DTR/FWO Delivery Date Quarter (To):** The quarter of the delivery. It is derived from the Delivery date (To) or Delivery Date (From) if empty.
- **DTR/FWO Delivery Date Year (To):** The year of the delivery. It is derived from the Delivery date (To) or Delivery Date (From) if empty.
- **DTR/FWO Destination Location:** It is the destination location partner ID
- **DTR/FWO Destination Location Address:** The address of destination location.
- **DTR/FWO Destination Location City:** The city of destination location
- **DTR/FWO Destination Location City Postal Code:** The postal code of the destination city.
- **DTR/FWO Destination Location Country:** The country of destination.
- **DTR/FWO Destination Location House Number:** The house number of the destination address.
- **DTR/FWO Destination Location Region:** The region code of destination.
- **DTR/FWO Destination Location Region Description:** The description of the region of destination.
- **DTR/FWO Destination Location Street:** The street name of destination.
- **DTR/FWO Document Category:** It is the DTR/FWO document category identifier.
- **DTR/FWO Document Category Description:** The description of the document category

Document Category	Description
02	Delivery-Based Transportation Requirement
03	Forwarding Order

- **DTR/FWO Document Number**
- **DTR/FWO Document Number (with leading zeros)**
- **DTR/FWO Document Type :** The document type identifier
- **DTR/FWO Document Type Description :** The document type description.

Document Type	Description
ZD01	DTR for UNOE

ZD02	DTR for STO
ZFW1	Forwarding Order for COE
ZFW2	Forwarding Order for COE Troops
ZFW3	Forwarding Order for Troops Land and Sea
ZFW4	Forwarding Order for Wide Body (LTC)

- **DTR/FWO Execution Status:** The execution status of the delivery-based transportation requirement

Execution Status	Description
01	Execution Not Started
02	In Execution
03	Executed

When the status in “In Execution” the delivery-based transportation requirement is currently being executed. At least one of the planning documents assigned to the order-based transportation requirement is in the execution process.

Once the execution of all planning documents assigned to the delivery-based transportation requirement has been completed the status changes to “Executed”.

- **DTR/FWO Execution Status Description**
- **DTR/FWO IATA Code Destination:** It indicates the IATA code of the destination airport in the FWO.
- **DTR/FWO IATA Code Source:** It indicates the IATA code of the source airport in the FWO.
- **DTR/FWO Incoterm:** The incoterm condition set in the DTR/FWO document. For example:

Incoterm	Description
CFR	Cost and Freight
CIF	Cost, Insurance & Freight
CIP	Carriage and Insurance Paid to
CPT	Carriage Paid To
DAP	Deliver to Place
DAT	Delivered at Terminal
DDP	Delivered Duty Paid
EXW	Ex Works
FAS	Free Alongside Ship
FCA	Free Carrier
FOB	Free on Board

...	...
-----	-----

- **DTR/FWO Incoterm Description**
- **DTR/FWO Incoterm Location**
- **DTR/FWO Life Cycle Status**

The following statuses are available in the delivery-based transportation requirement:

Lifecycle Status	Description
01	New
02	In Planning
03	Planned
04	In Execution
07	Completed
10	Cancelled

Please note the following while analysing the different status values:

New: the delivery-based transportation requirement has been created. No freight units have been assigned to the delivery-based transportation requirement yet.

In Planning: The delivery-based transportation requirement is in the planning process and at least one freight unit has been created for the transportation requirement.

Planned: All the freight units that are assigned to the delivery-based transportation requirement have been planned.

In Execution: The delivery-based transportation requirement is in the execution process. At least one follow-on document (not necessarily a freight unit) is in execution. For more information about the execution of a transportation requirement, see the Execution Status of the transportation requirement or of the follow-on documents

Completed: Processing of the delivery-based transportation requirement has been completed. Execution has finished.

Cancelled: The delivery-based transportation requirement has been cancelled.

- **DTR/FWO Life Cycle Status Description**
- **DTR/FWO Movement Type:** It is the Forwarding Order movement type, for example:

Movement Type	Description
ZDE	Deployment
ZFA	Air Main Leg
ZFG	DD Movement Type FWO PMC
ZFI	Positioning

ZFO	Depositioning
ZFR	Ferry
ZFW	Door to Door
ZRE	Repatriation
ZRO	Rotation
...	...

- **DTR/FWO Movement Type Description**
- **DTR/FWO Original Delivery Billing Status:** The Delivery Delivery-based Transportation Requirement Billing Status of the Inbound or Outbound Delivery

Billing Status
Not Relevant
A - Not Processed Yet
B - Partially Processed
C - Completely Processed

- **DTR/FWO Original Delivery Distribution Status:** The Delivery Delivery-based Transportation Requirement Distribution Status of the Inbound or Outbound Delivery

Billing Status
Not Relevant
A - Not Processed Yet
B - Partially Processed
C - Completely Processed

- **DTR/FWO Original Delivery Goods Movement Status:** The Delivery Delivery-based Transportation Requirement Goods Movement Status of the Inbound or Outbound Delivery

Billing Status
Not Relevant
A - Not Processed Yet
B - Partially Processed
C - Completely Processed

- **DTR/FWO Original Delivery Packing Status:** The Delivery Delivery-based Transportation Requirement Packing Status of the Inbound or Outbound Delivery

Billing Status
Not Relevant
A - Not Processed Yet

B - Partially Processed
C - Completely Processed

- **DTR/FWO Original Delivery Picking Status:** The Delivery Delivery-based Transportation Requirement Picking Status of the Inbound or Outbound Delivery

Billing Status
Not Relevant
A - Not Processed Yet
B - Partially Processed
C - Completely Processed

- **DTR/FWO Original Delivery Planning Status:** The Delivery Delivery-based Transportation Requirement Planning Status of the Inbound or Outbound Delivery

Billing Status
Not Relevant
A - Not Processed Yet
B - Partially Processed
C - Completely Processed

- **DTR/FWO Original Delivery Type:** It indicates if the Delivery Delivery-based Transportation Requirement is linked to an 'Inbound Delivery' or 'Outbound Delivery'.
- **DTR/FWO Pickup Date (From):** It indicates the Pick Up (From) date in the source location
- **DTR/FWO Pickup Date (To):** It indicates the Pick Up (To) date in the source location
- **DTR/FWO Planning Status:** The planning status of DTR or FWO

Planning Status	Description
01	Planning Not Started
02	In Planning
03	Planned
04	Partially Planned

- **DTR/FWO Planning Status Description**
- **DTR/FWO Purchase Order**
- **DTR/FWO Purchase Order (with leading zeroes)**
- **DTR/FWO Purchase Order Approval Date**
- **DTR/FWO Sales Group:** The Sales Group of DTR or FWO. For example:

Sales Group	Description
50000637	PD Field Supp Team

50000658	PD Reg Proc Office
...	...

- **DTR/FWO Sales Group Description**
- **DTR/FWO Sales Organization**
- **DTR/FWO Sales Organization Description**
- **DTR/FWO Shipper:** The Shipper in the Business Partner section of the document
- **DTR/FWO Shipper Description**
- **DTR/FWO Source Location:** It is the source location partner ID

- **DTR/FWO Source Location Address:** The address of the source location.
- **DTR/FWO Source Location City:** The city of source location
- **DTR/FWO Source Location City Postal Code:** The postal code of the source city.
- **DTR/FWO Source Location Country:** The country of the source.
- **DTR/FWO Source Location House Number:** The house number of the source address.
- **DTR/FWO Source Location Region:** The region code of source.
- **DTR/FWO Source Location Region Description:** The description of the source region.
- **DTR/FWO Source Location Street:** The street name of the source.

- **DTR/FWO Transportation Mode:** The shipping transportation mode
- **DTR/FWO Transportation Mode Description**

Transportation Mode	Description
01	Road
02	Rail
03	Sea
04	Inland Waterway
05	Air
...	..

- **DTR/FWO Transportation Mode Category:** The shipping transportation mode category

Transportation Mode Category	Description
1	Road
2	Rail
3	Sea

- **DTR/FWO Transportation Mode Category Description**

- **FO Aircraft Type:** Aircraft type used in the Forwarding Order document. It's recorded in TM, at Items level, as a new Document Reference having ZATP, Aircraft Type, as Document Type for Business Transaction.
- **FO Arrival Date:** Arrival date and time of the Freight Order
- **FO Arrival Date Month:** Arrival month of the Freight Order
- **FO Arrival Date Quarter:** Arrival quarter of the Freight Order
- **FO Arrival Date Year:** Arrival year of the Freight Order
- **FO Carrier:** It is the carrier employed in the Freight Order. For example:

Carrier	Description
1110001336	AIRCRAFT MAINTENANCE SUPPORT SERVICES LIMITED
1110001300	Nissan Trading Co.,Ltd.
...	...

- **FO Carrier Description**

- **FO Changed By:** Last user who changed the Freight Order document
- **FO Changed on:** Date when the last change in the document was applied.
- **FO Consignee:** It is the consignee of the Freight Order. It indicates the recipient of the transport and should have an equivalence with the Plant in ECC. For example:

Consignee	Description
KE00	UN Office at Nairobi UNON
LB10	UN Interim Force in Lebanon UNIFIL
...	...

- **FO Consignee Description:**

- **FO Created By:** User who created the Freight Order.
- **FO Created on:** Date when the Freight Order was created.
- **FO Dangerous Goods:** It is the flag to indicate if the Freight Order contains dangerous goods.
- **FO Delivery Status:** It indicates if the Freight Order has been delivered.

Delivery Status	Description
01	Not Delivered
02	Partially Delivered
03	Delivered

- **FO Delivery Status Description:**

- **FO Departure Date:** It indicates the departure date of the Freight Order.

- **FO Departure Date Month:** The departure month of the Freight Order.
- **FO Departure Date Quarter:** The departure quarter of the Freight Order.
- **FO Departure Date Year:** The departure year of the Freight Order.
- **FO Destination Location :** The destination location code. It has FO Destination Location Address assigned as label. For example:

Destination Location
BEIRUT_AIRPORT
SPSSA1
...

- **FO Destination Location Address:** It indicates the address of the destination location. For example:

Destination Location	Address
BEIRUT_AIRPORT	Beirut
SPSSA1	UN House in Jebel Kujur / Kujur
...	...

- **FO Destination Location City:** The city of destination of Freight Order. For example:

Destination Location	City
BEIRUT_AIRPORT	Beirut
SPSSA1	Kujur
...	...

- **FO Destination Location City Postal Code:** The postal code of the city of destination
- **FO Destination Location Country:** The country code of destination. For example:

Destination Location	Country
BEIRUT_AIRPORT	LB
SPSSA1	SS
...	...

- **FO Destination Location Country Description:** The name of the country of destination. For example:

Destination Location	Country	Country Description
BEIRUT_AIRPORT	LB	Lebanon
SPSSA1	SS	South Sudan
...

- **FO Destination Location House Number:** The house number in the address of destination
- **FO Destination Location Region:** The region code of destination. For example:

Destination Location	Country	Region Code	Region Description
BEIRUT_AIRPORT	LB	BA	Beyrouth
SPSSA1	SS	EC	Central Equatoria
...

Note the same region code could be valid in different countries so it is best practice to display Region together with Country.

- **FO Destination Location Region Description :**
- **FO Destination Location Street:** The street of the destination address.
- **FO Document:** Freight Order document number
- **FO Document (with leading zeroes):**
- **FO Document Type:**
- **FO Document Type Description:** The type of Freight Order Document.

Document Type	Document Type Description
1000	Freight Order with Subcontracting
2000	Rail Freight Order
ZFO1	UNOE Planned Frt Order (FF Deliv)
ZFO2	COE UN Planned Frt Order (non-LOA)
ZFO3	UNOE Vendor Delivered Frt Order (VNDeliv)
ZFO4	COE Member Planned Frt Order (LOA)
ZFO5	Troops UN Planned Frt Order(Non-LOA)
ZFO6	Troops Member Planned Frt Order(LOA)

- **FO Execution Status:**
- **FO Execution Status Description:**

Execution Status	Execution Status Description
02	Not Started
03	In Execution
04	Executed
07	Ready for Transportation Execution
08	Not Ready for Transportation Execution
09	Loading in Process
...	...

- **FO First Activity:** First Activity date of the Freight Order

- **FO Gross Volume Unit of Measure:** Unit of measure in which the measure FO Gross Volume is expressed.
- **FO Gross Weight Unit of Measure:** Unit of measure in which the measure FO Gross Weight is expressed.
- **FO Incoterm:** It indicates the Incoterm condition code.
- **FO Incoterm Description:**

Incoterm	Incoterm Description
CPT	Carriage Paid to
DAP	Deliver to Place
DAT	Delivered at Terminal
DDP	Delivered Duty Paid
EXW	Ex Works
FAS	Free Alongside Ship
FCA	Free Carrier
FOB	Free on Board
...	...

- **FO Item Calculated Amount Currency:** It indicates the currency in which the measure *FO Item Calculated Amount* is expressed.
- **FO Item Charge Inactive:** It is the flag (“X”) that indicates if a charge line has been deactivated. For example, when an ESTIMATE charge is converted to ACTUAL it will show as “X”.
- **FO Item Charge Number:** It shows the Freight Order line item being charged.
- **FO Item Charge Type:** It indicates if the Freight Order line is currently with ESTIMATE or ACTUAL charge.
- **FO Item Final Amount Currency:** It is the currency in which the *FO Item Final Amount* measure is expressed.
- **FO Item Main Cargo:** It indicates if a line item is part of the cargo quantity. If an item is not flagged as cargo means it is included in one of the cargo lines, like shown in below sample:

Analysis 2			
FO Document	FO Item Number	FO Item Type	FO Item Main Cargo
6100006766	0000000040	PRD	
	0000000050	PRD	
	0000000060	PRD	
	0000000070	PACK	X
	0000000080	PACK	X
	0000000090	PACK	X

- **FO Item Number:** Item number in the Freight Order document

- **FO Item Rate Amount Currency:** It is the currency in which the *FO Item Rate Amount* measure is expressed.
- **FO Item Type:** It indicates the type of item in the Freight Order. For example:

Item Type	Description
PRD	Product
PACK	Pack
CONT	Container
...	

- **FO Last Activity:** Last Activity date of the Freight Order.
- **FO Life Cycle Status:** The Life Cycle status of the Freight Order.
- **FO Life Cycle Status Description:**

Life Cycle Status	Description
00	Draft
01	New
02	In Process
05	Completed
10	Canceled

The value of the status is derived as follows:

New: The business document has been created but has not been considered in planning and execution yet.

In Process: Planning, execution, subcontracting, or invoicing was started.

Complete: The transportation execution is finished, and the invoicing status is set to Completely Invoiced (or no invoice is expected). This status is set automatically by the system. You can set this status manually if the business document has the life cycle status In Process.

Canceled: Planning and execution of transportation is cancelled. You can set this status manually at any time in the planning process by selecting the Cancel Document pushbutton.

- **FO Main Key:** Internal identifier of the Freight Order document used for technical joins with other sources of data.
- **FO Means of Transport:** The means of transport code in the Freight Order. For example:

Means of Transport
COE_SEA
COE_TRK
TROOPS_AIR
TROOPS_LTC

UNOE_AIR
UNOE_SEA
UNOE_TRK
...

- **FO Planning Group:** It indicates the Planning Group in the Freight Order
- **FO Planning Group Description:**

Planning Group	Planning Group Description
50000613	Planning & Execution Strat. Mov
50000633	Planning & Execution Field Supp
...	

- **FO Product:** It is the Product ID. For samples see below table.
- **FO Product (with leading zeroes)**
- **FO Product Description:**

Product	Product (with leading zeroes)	Description
1500005098	000...001500005098	Docking Stn
1200002407	000...001200002407	Spare:TPT
CONTAINER	CONTAINER	CONTAINER
TROOPS	TROOPS	TROOPS
...

- **FO Purchasing Group:** The Purchasing Group of the Freight Order
- **FO Purchasing Group Description:**

Purchasing Group	Purchasing Group Description
50000612	PD Strat. Mov Team
50000709	F381 - UNGSC Proc -1
...	

- **FO Purchasing Org:** The Purchasing Organization, which is always set as 50000609 - United Nations Purchasing Org.
- **FO Purchasing Org Description:**
- **FO Quantity Unit of Measure:** The unit in which the measure *FO Quantity* is expressed. For example:

Unit	Description
EA	Each
ST	Piece
TO	Ton
M	Meter
...	...

- **FO Shipper:** It displays the Freight Order shipper. For Example:

Shipper	Description
110001370	Lenovo (United States) Inc
1110001446	CATERPILLAR (NI) LIMITED
...	

- **FO Shipper Description:**

- **FO Source Location:** The source location code. It has FO Destination Location Address assigned as label. For example:

Source Location
BEIRUT_AIRPORT
SPSSA1
...

- **FO Source Location Address:** It indicates the address of the source location. For example:

Source Location	Address
BEIRUT_AIRPORT	Beirut
SPSSA1	UN House in Jebel Kujur / Kujur
...	...

- **FO Source Location City:** The city of source of Freight Order. For example:

Source Location	City
BEIRUT_AIRPORT	Beirut
SPSSA1	Kujur
...	...

- **FO Source Location City Postal Code:** The postal code of the sourcing city.

- **FO Source Location Country:** The country code of the source location. For example:

Source Location	Country
BEIRUT_AIRPORT	LB
SPSSA1	SS
...	...

- **FO Source Location Country Description:** The name of the country of the source. For example:

Source Location	Country	Country Description
-----------------	---------	---------------------

BEIRUT_AIRPORT	LB	Lebanon
SPSSA1	SS	South Sudan
...

- **FO Source Location House Number:** The house number in the address of source location.
- **FO Source Location Region:** The region code of the source location. For example:

Source Location	Country	Region Code	Region Description
BEIRUT_AIRPORT	LB	BA	Beyrouth
SPSSA1	SS	EC	Central Equatoria
...

Note the same region code could be valid in different countries so it is best practice to display Region together with Country.

- **FO Source Location Region Description :**
- **FO Source Location Street:** The street of the source address.
- **FO SRM Freight PO:** It indicates the Purchase order number for the Freight created in SRM
- **FO Subcontracting Status:** The subcontracting status in the Freight Order
- **FO Subcontracting Status Description:**

Subcontracting Status	Subcontracting Status Description
01	No Subcontracting Result
02	In Tendering
03	Carrier Assigned
04	Sent
05	Changed After Sending

This status is set automatically by the system and is derived as follows:

No Subcontracting Result: The carrier has not been determined for the Freight Order.

In Tendering: Carrier has not been determined, but a tendering process is already in process.

Carrier Assigned: Carrier was assigned.

Sent: The business document was sent to the assigned carrier.

- **FO Total Distance in km:** It indicates the distance in Km. in the Freight Order.
- **FO Total Duration:** The duration expressed in hh:mm:ss.

- **FO Transportation Mode:** The transportation mode of the Freight Order

Transportation Mode	Description
01	Road
02	Rail
03	Sea
04	Inland Waterway
05	Air
...	..

- **FO Transportation Mode Description:**
- **FU Arrival Date:** Arrival to destination date of the Freight Unit expressed as YYYYMMDD.
- **FU Changed By:** User who last changed the Freight Unit document
- **FU Changed on:** Date of the last change done to the Freight Unit document

FU Consignee: It is the consignee of the Freight Unit document. It indicates the recipient of the Freight Unit and should have an equivalence with the Plant in ECC. For example:

Consignee	Description
KE00	UN Office at Nairobi UNON
LB10	UN Interim Force in Lebanon UNIFIL
...	...

- **FU Consignee Description:**
- **FU Created By:** User who created the Freight Unit document.
- **FU Created on:** Date when the Freight Unit document was created.
- **FU Dangerous Goods:** It indicates if the Freight Unit contains dangerous goods.
- **FU Delivery Date From:** It indicates the start date of the time interval to deliver the Freight Unit.
- **FU Delivery Date To:** It indicates the end date of the time interval to deliver the Freight Unit.
- **FU Departure Date:** It is the departure date of the Freight Unit
- **FU Destination Location:** It is the code of the destination location of the Freight Unit
- **FU Destination Location Address:** It is the address of the Freight Unit Destination location.
- **FU Destination Stage Description:** It indicates the category of the destination stop

Stage	Description
I	Stop with Change of Main Resource - Inbound
O	Stop with Change of Main Resource - Outbound

S	Stop without Change of Main Resource
E	Stop for Service Execution
...	...

- **FU Document:** It is the Freight Unit document number
- **FU Document Description:** It displays the label description of the Freight Unit document.
- **FU Document (with leading zeroes):**
- **FU Document Type:** It indicates the type of Freight Unit document

Type	Description
ZFU1	UNOE Planned Frt Unit
ZFU2	COE Non-LOA Frt Unit
ZFU3	UNOE Vendor Delivered Frt Unit
ZFU4	COE LOA Frt Unit
ZFU5	COE Non-LOA Troops
ZFU6	COE LOA Troops
ZFU7	UNOE EXW FF Planned Frt Unit
ZFU8	TROOPS Land and Sea Non-LOA Frt Unit
ZFU9	TROOPS Land and Sea LOA Frt Unit
ZF12	STO Planned Frt Unit
...	...

- **FU Document Type Description:**
- **FU Execution Status:** It indicates the execution status of the Freight Unit.

Type	Description
01	Not Relevant
02	Not Started
03	In Execution
04	Executed
05	Interrupted
06	Canceled
07	Capacity Planning Finished
08	Ready for Transportation Execution
09	Not Ready for Transportation Execution
10	Loading in Process
...	...

- **FU Execution Status Description**
- **FU Incoterm:** The incoterm condition set in the Freight Unit document.
For example:

Incoterm	Description
CFR	Cost and Freight
CIF	Cost, Insurance & Freight
CIP	Carriage and Insurance Paid to
CPT	Carriage Paid To
DAP	Deliver to Place
DAT	Delivered at Terminal
DDP	Delivered Duty Paid
EXW	Ex Works
FAS	Free Alongside Ship
FCA	Free Carrier
FOB	Free on Board
...	...

- **FU Incoterm Description**

- **FU Incoterm Location:** It is the incoterm location code.
- **FU Incoterm Location (Free Text):**
- **FU Main Key:** It is the technical internal of the document in the system.
- **FU Pickup Date From:** Start date of the pickup process specified in the Freight Unit document.
- **FU Pickup Date To:** End date of the pickup process specified in the Freight Unit document.
- **FU Planning Group:** The Planning Group of the Freight Unit.
- **FU Planning Group Description**
- **FU Purchasing Group:**
- **FU Purchasing Group Description:**
- **FU Purchasing Org**
- **FU Requirements ID:** It shows the DTR/FWO document linked to the Freight Unit
- **FU Sales Group:** The Sales Group of the Freight Unit
- **FU Sales Group Description:**
- **FU Shipper:** The Shipper of the Freight Unit. For example:

Shipper	Description
110002298	AERONAV INC.
1110001556	MANITOU BF
...	

- **FU Shipper Description:**
- **FU Source Location:** It is the code of the source location of the Freight Unit

- **FU Source Location Address:** It is the address of the Freight Unit Destination location.
- **FU Source Stage Description:** It indicates the category of the source stop

Stage	Description
I	Stop with Change of Main Resource - Inbound
O	Stop with Change of Main Resource - Outbound
S	Stop without Change of Main Resource
E	Stop for Service Execution
...	...

- **FU Transportation Mode:** The shipping transportation mode.
- **FU Transportation Mode Description:**

Transportation Mode	Description
01	Road
02	Rail
03	Sea
04	Inland Waterway
05	Air
...	..

- **FWO Charter Type:** It indicates the type of charter, *Long Term* or *Short Term* depending on the document type and incoterms of the Forwarding Order. When the document type is equal to **ZFW4** then **Long-Term**, else when is equal to **ZFW2** or **ZFW3** and the incoterm are equal to **EXW** then **Short-Term**
- **FWO LOA Non-LOA Type:** *LOA* or *NON-LOA*. The Forwarding Order it's linked to a Letter of Assist, *LOA*, if the document type is equal to **ZFW1** and the incoterms are equal to **DAP**, else when is equal to **ZFW1** and the incoterms are **EXW** it's not linked to a Letter of Assist, *NON-LOA*
- **STO Status:** It indicates the Stock Transfer Order status. For example, 'Active', 'In release', 'Release completed', ...
- **STO Type:** It indicates the STO purchase order type. For example:

STO	Description
NB	Standard PO
ZSDS	STO SDS UNR IPSAS
...	...

- **STO Type Description:**

- **STR Control Indicator:** It is the Stock Transfer Request Control Indicator. For example:

T - Transport
R - Purchase requisition for outline agreement
...

- **STR Creation Indicator:** It is the Stock Transfer Request Creation Indicator.

A - SAP APO
B - Material requirement planning
D - Direct procurement
F - Production order
G - Store order
R - Realtime (manual)
U - Converted planned order
V - Sales and distribution document
M - Compression (monthly basis)
Y - Compression (annual basis)

- **STR Number:** Stock Transport Request Number linked to the *DTR/FWO Purchase Order*
- **STR Plant:** Plant of the Stock Transfer Request linked to the *DTR/FWO Purchase Order*
- **STR Processing Status:** It indicates the status of the Stock Transport Request Number

N - Not edited
B - PO created
A - RFQ created
K - Contract created
L - Scheduling agreement created
S - Service entry sheet created
E - RFQ sent to external system for sourcing

- **STR Release Indicator:** It is the Stock Transfer Request Release Indicator

1 – Request for quotation
2 – RFQ/purchase order
3 – RFQ/PO no change of date
4 – RFQ/PO no changes
A – Fixed RFQ
B – Fixed RFQ/purchase order
X - Blocked

Transportation Management BI Report End to End - Freight Orders Items and Charges

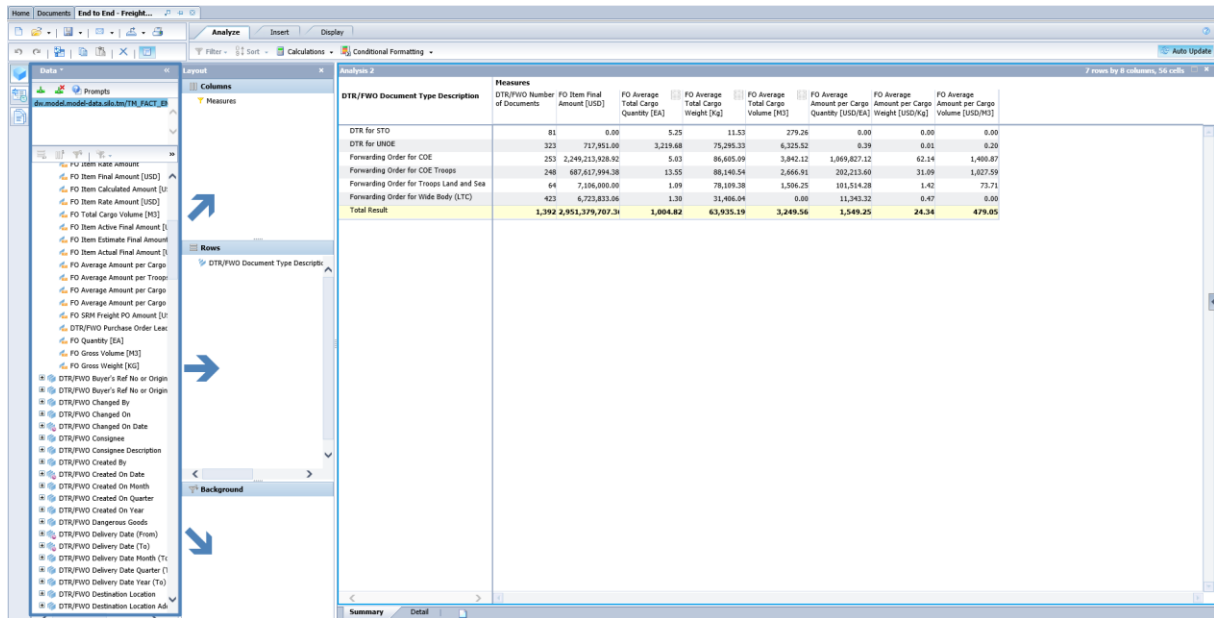
Z – Purchase Order

- **STR Release Status:** It is the flag “X” that indicates if the purchase requisition is released
- **STR Release Strategy:** It indicates the release strategy in the purchase requisition. For example:

ST – Stock Transport Req.
...

- **STR Storage Location:** Storage Location of the Stock Transfer Request linked to the *DTR/FWO Purchase Order*.

Note that any Measure or Characteristic can be added dynamically to the Rows, Columns or Background sections:



The report contains two tabs:



- **Summary tab**

DTR/FWO Document Type Description	Measures									
	DTR/FWO Number of Documents	FO Item Final Amount [USD]	FO Average Total Cargo Quantity [EA]	FO Average Total Cargo Weight [Kg]	FO Average Total Cargo Volume [M3]	FO Average Amount per Cargo Quantity [USD/EA]	FO Average Amount per Cargo Weight [USD/Kg]	FO Average Amount per Cargo Volume [USD/M3]	FO Total Cargo Weight [Kg]	FO Number of Documents
DTR for STO	81	0.00	5.25	11.53	279.26	0.00	0.00	0.00	1,753.20	152
DTR for UNOE	323	717,951.00	3,219.68	75,295.33	6,325.52	0.39	0.01	0.20	41,788,907.00	555
Forwarding Order for COE	253	2,249,213,928.92	5.03	86,605.09	3,842.12	1,069,827.12	62.14	1,400.87	33,516,170.18	387
Forwarding Order for COE Troops	248	687,617,994.38	13.55	88,140.54	2,666.91	202,213.60	31.09	1,027.59	21,946,995.00	249
Forwarding Order for Troops Land and Sea	64	7,106,000.00	1.09	78,109.38	1,506.25	101,514.28	1.42	73.71	4,999,000.00	64
Forwarding Order for Wide Body (LTC)	423	6,723,833.06	1.30	31,406.04	0.00	11,343.32	0.47	0.00	11,871,484.00	378
Total Result	1,392	2,951,379,707.31	1,004.82	63,935.19	3,249.56	1,549.25	24.34	479.05	114,124,309.38	1,785

Columns Section

It provides the following Measures:

- DTR/FWO Number of Documents
- FO Item Final Amount [USD]
- FO Average Total Cargo Quantity [EA]
- FO Total Cargo Weight [Kg]
- FO Average Total Cargo Volume [M3]
- FO Average Amount per Cargo Quantity [USD/EA]
- FO Average Amount per Cargo Weight [USD/Kg]
- FO Average Amount per Cargo Volume [USD/M3]

Note: All the average measures show average calculation per freight order documents, like the sample shown in below illustration:

DTR/FWO Document Type Description	Measures									7 rows by 10	
	DTR/FWO Number of Documents	FO Item Final Amount [USD]	FO Average Total Cargo Quantity [EA]	FO Average Total Cargo Weight [Kg]	FO Average Total Cargo Volume [M3]	FO Average Amount per Cargo Quantity [USD/EA]	FO Average Amount per Cargo Weight [USD/Kg]	FO Average Amount per Cargo Volume [USD/M3]	FO Total Cargo Weight [Kg]	FO Number of Documents	
DTR for STO	81	0.00	5.25	11.53	279.26	0.00	0.00	0.00	1,753.20	152	
DTR for UNOE	323	717,951.00	3,219.68	75,295.33	6,325.52	0.39	0.01	0.20	41,788,907.00	555	
Forwarding Order for COE	253	2,249,213,928.92	5.03	86,605.09	3,842.12	1,069,827.12	62.14	1,400.87	33,516,170.18	387	
Forwarding Order for COE Troops	248	687,617,994.38	13.55	88,140.54	2,666.91	202,213.60	31.09	1,027.59	21,946,995.00	249	
Forwarding Order for Troops Land and Sea	64	7,106,000.00	1.09	78,109.38	1,506.25	101,514.28	1.42	73.71	4,999,000.00	64	
Forwarding Order for Wide Body (LTC)	423	6,723,833.06	1.30	31,406.04	0.00	11,343.32	0.47	0.00	11,871,484.00	378	
Total Result	1,392	2,951,379,707.31	1,004.82	63,935.19	3,249.56	1,549.25	24.34	479.05	114,124,309.38	1,785	

$$63,935.19 = 114,124,309.38 / 1,785$$

Rows Section

The Rows Section contains the characteristics or dimension attributes. In this tab, it contains the *DTR/FWO Document Type Description* as the default option to help aggregate and visualize the measures.

Background Filters

Background filters apply restriction of data to the entire Analysis, in this case there are no background filters applied by default.

- Details tab

Analysis 1								7462 rows by 7 columns							
DTR/FWO Document Number	FU Document	FO Document	FO Source Location Address	FO Destination Location Address	FO Item Number	FO Item Type	FO Product	Measures							
								FO Average Total Cargo Quantity [EA]	FO Average Total Cargo Weight [Kg]	FO Item Final Amount [USD]	FO Average Total Cargo Volume [M3]	FO Average Amount per Cargo Weight [USD/Kg]	FO Average Amount per Cargo Volume [USD/M3]	FO Average Amount per Cargo Quantity [USD/EA]	
2100000356	4100001133	6100002255	Dakar	Minusma Mission /DS05DS Minusma	0000000010	PRD	BREAKBULK	3.00	600.00	0.00	80.00	0.00	0.00	0.00	
					0000000020	PRD	VEHICLE	1.00	1,900.00	0.00	150.00	0.00	0.00	0.00	
2100000355	4100001132	6100002249	Dakar	Minusma Mission /DS05DS Minusma	0000000010	PRD	BREAKBULK	3.00	600.00	0.00	80.00	0.00	0.00	0.00	
					0000000020	PRD	VEHICLE	1.00	1,900.00	0.00	150.00	0.00	0.00	0.00	
2100000354	4100001131	6100002243	Dakar	Minusma Mission /DS05DS Minusma	0000000010	PRD	GENERATORS (LOADED INSIDE TEU)	3.00	600.00	0.00	80.00	0.00	0.00	0.00	
					0000000020	PRD	BUS (13-24) NISSAN	1.00	1,900.00	0.00	150.00	0.00	0.00	0.00	
2100000352	4100001128	6100002237	Dakar	Minusma Mission /DS05DS Minusma	0000000010	PRD	GENERATORS (LOADED INSIDE TEU)	3.00	600.00	0.00	10.00	0.00	0.00	0.00	
					0000000020	PRD	BUS (13-24) NISSAN	1.00	1,900.00	0.00	20.00	0.00	0.00	0.00	
2100000351	4100001125	6100002516	Dakar	Minusma Mission /DS05DS Minusma	0000000060	PRD	GENERATORS (LOADED INSIDE TEU)	3.00	600.00	0.00	10.00	0.00	0.00	0.00	
					0000000070	PRD	BUS (13-24) NISSAN	1.00	1,900.00	0.00	20.00	0.00	0.00	0.00	
					0000000080	PRD	JEEP (4X4) LANDCRUIZER HARDTOP	4.00	6,900.00	0.00	30.00	0.00	0.00	0.00	
					0000000090	PRD	HOBART (EXTERNAL POWER) - LOADED	1.00	450.00	0.00	40.00	0.00	0.00	0.00	
					0000000100	PRD	DG CONTAINERS	3.00	30,000.00	0.00	50.00	0.00	0.00	0.00	

■ Columns Section

It provides the following Measures by default:

- FO Average Total Cargo Quantity [EA]
- FO Average Total Cargo Weight [Kg]
- FO Item Final Amount [USD]
- FO Average Total Cargo Volume [M3]
- FO Average Amount per Cargo Weight [USD/Kg]
- FO Average Amount per Cargo Volume [USD/M3]
- FO Average Amount per Cargo Quantity [USD/EA]

Note: Averages are calculated dividing total amounts by the count of FO documents.

■ Rows Section

The Rows Section contains the characteristics or dimension attributes. In this tab, it contains:

- DTR/FWO Document Number
- FU Document
- FO Document
- FO Source Location Address
- FO Destination Location Address
- FO Item Number
- FO Item Type
- FO Product

■ Background Filters

Background filters apply restriction of data to the entire Analysis, in this case there are no background filters applied by default.

Please refer to the next section Scope Determination to understand important concepts used in the background for the calculations.



Scope determination

The below **conditions** apply in the logic selected to retrieve the data for the report:

- The report selects all Freight Order documents applying the restrictions selected by user in the prompts window while running the report.

Additional Resources

NV301 Umoja Advanced BI Navigation guide:

https://umoja.un.org/sites/umoja.un.org/files/nv301-umoja_advanced_bi_navigation_cbt_v9.pdf